



Maximum lifting height: 22,80 m

Maximum reach: 19,50 m

Electronically controlled hydrostatic transmission

Automatic levelling device

Pivoting stabilizers

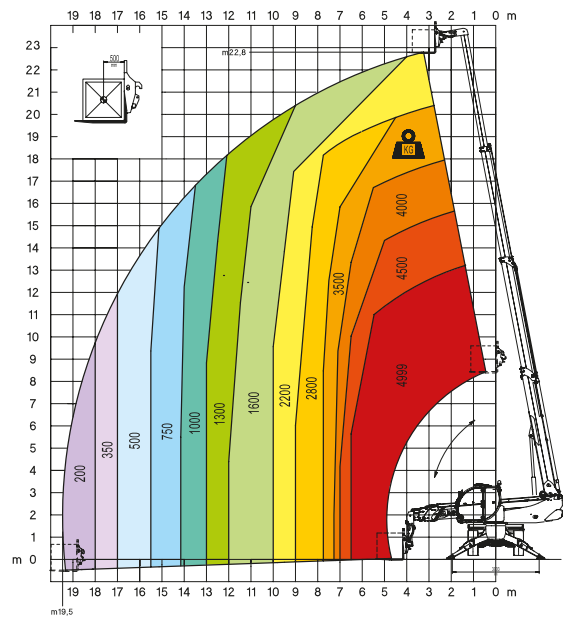
RTH5.23 *Smart*

Magni Telescopic Handlers srl

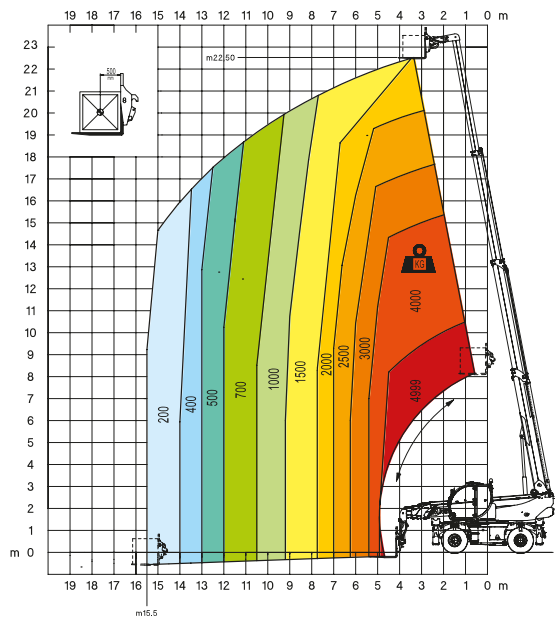
Via Magellano, 22 - 41013 Castelfranco Emilia, Modena, Italia - Tel: +39 059 8630811 - Fax: +39 059 8638012

commerciale@magnith.com - www.magnith.com

360° fully extended stabilizers load chart with forks

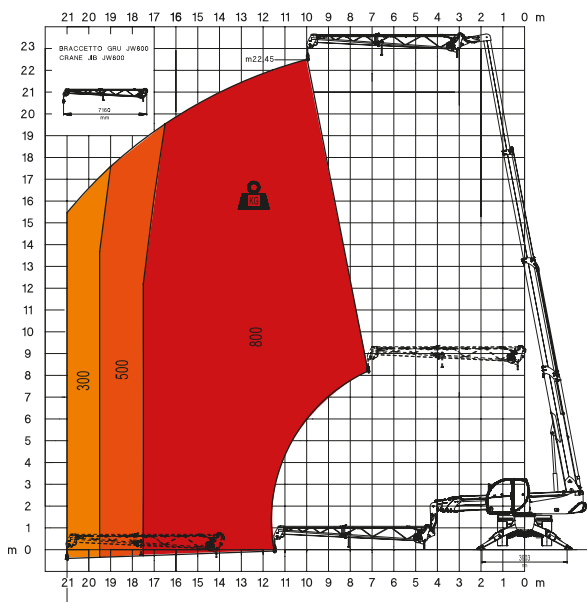
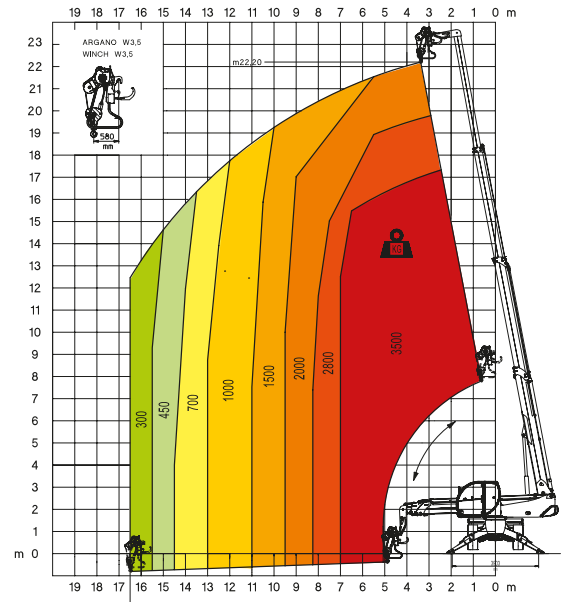


Frontal position load chart on tyres with forks



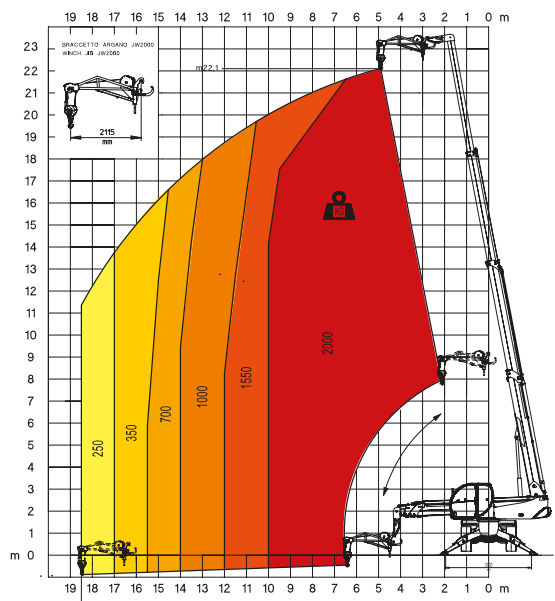
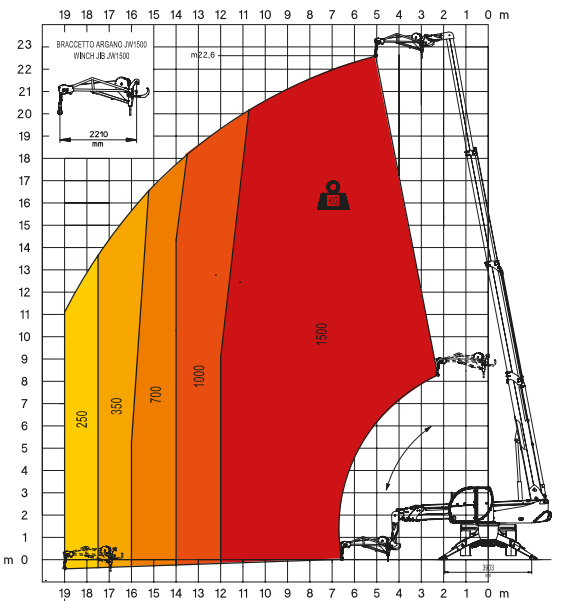
W 3,5
winch 3,5 ton

JW 800
Jib winch 800



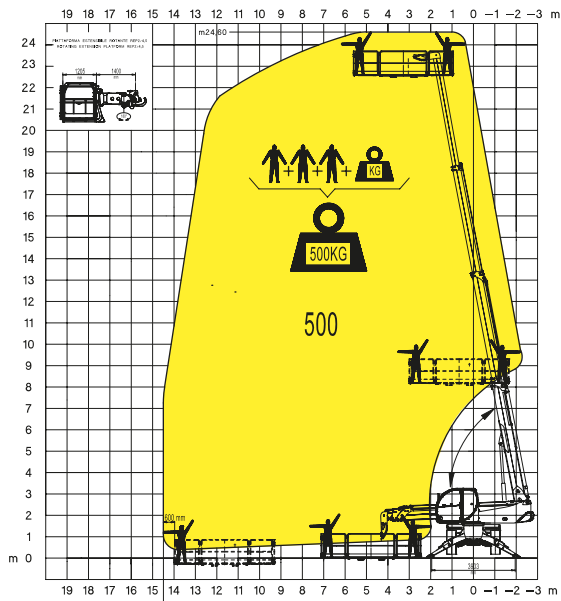
JW 1500
Jib winch 1.500

JW 2000
Jib winch 2.000



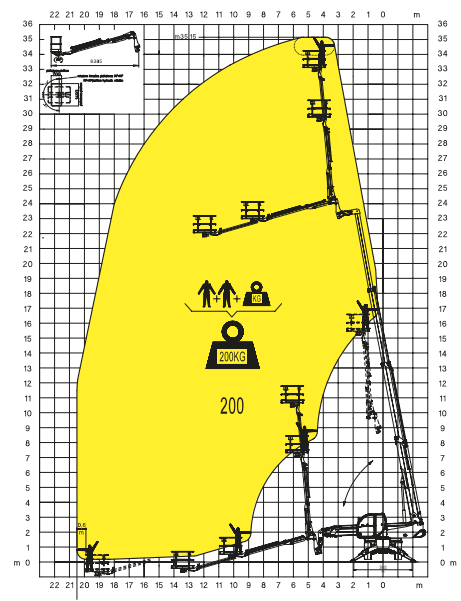
REP 2-4,5

Rotating extendable men platform 500kg



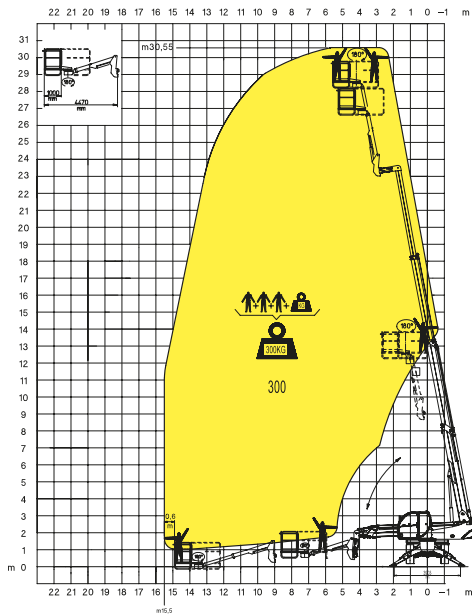
TP 2.10

Telescopic Platform TP 2.10



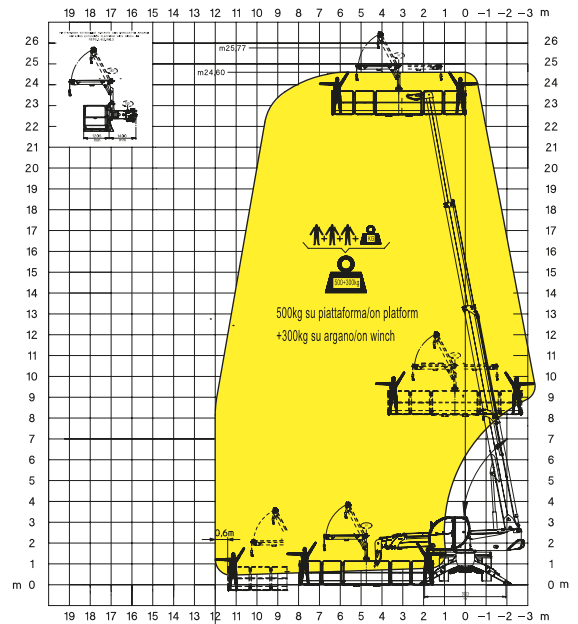
TP

Telescopic pivoting men platform with 180° rotation



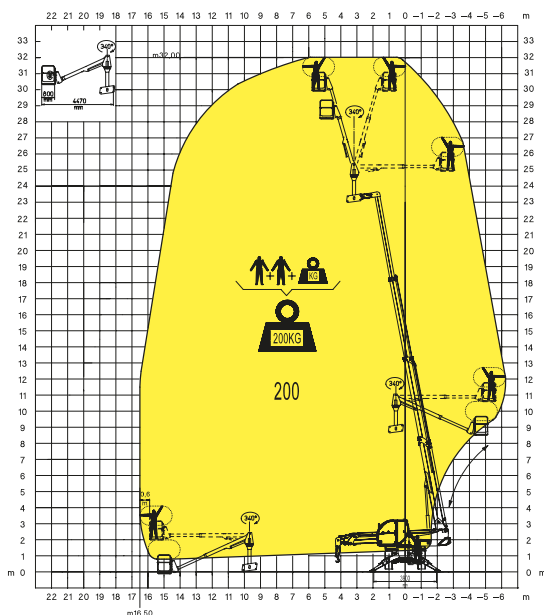
REP 2-6,5 W0,3

Platform 6,5m 500kg with winch 300kg



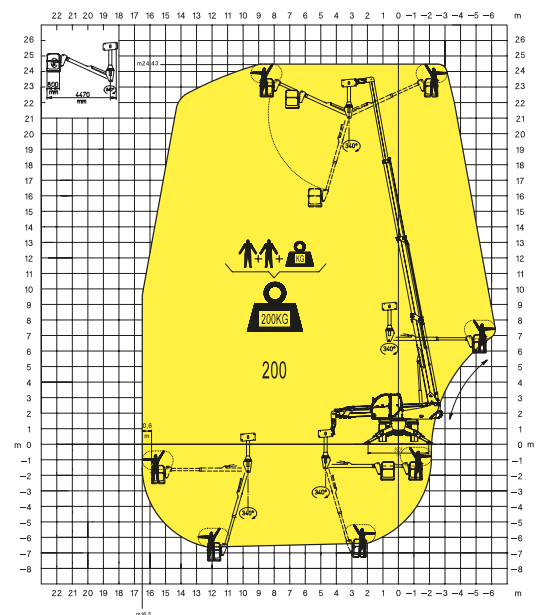
TP O-U

Telescopic pivoting men platform over-under with 340° rotation



TP O-U

Telescopic pivoting men platform over-under with 340° rotation



MACHINE MODEL	Rotating telescopic handler	RTH 5.23 Smart			
	Maximum lifting capacity	4.999 kg (center of gravity 500 mm)			
	Maximum lifting height	22,80 m			
ENGINE - DEUTZ	Type	Deutz TCD 3.6 L4 - stage IV		Deutz TCD 3.6 L4 EDG - stage 3A compliant	
	Rated power	100 kW - 134 HP at 2.200 rpm		100 kW - 134 HP at 2.200 rpm	
	Maximum torque	500 Nm at 1.600 rpm		500 Nm at 1.600 rpm	
	Displacement	3,6 l		3,6 l	
	Cylinders	4 in line		4 in line	
	Fuel	Diesel direct injection turbocharged		Diesel direct injection turbocharged	
	Cooling system	Water – intercooler		Water – intercooler	
ENGINE - JCB	Type	JCB ECOMAX stage IV i		JCB DIESELMAX stage 3A	
	Rated power	93 kW - 126 HP to 2.200 rpm		97 kW - 131 HP to 2.200 rpm	
	Maximum torque	550 to 1.500 rpm		532 to 1.500 rpm	
	Displacement	4.399		4.399	
	Cylinders	4		4	
	Fuel	Diesel direct injection turbocharged		Diesel direct injection turbocharged	
	Cooling system	Water – intercooler		Water – intercooler	
TRANSMISSION	Type	Hydrostatic			
	Model	Bosch – Rexroth			
	Maximum pressure	500 bar			
	Displacements	Variable displacement pump electronically controlled Variable displacement motor			
	Gear box	2 speeds forward-reverse			
AXLES AND BRAKES	Type	Axles with epicyclic reduction gear			
	Rear axle	Oscillating and steering with hydraulic locking			
	Front axle	Oscillating and steering with automatic levelling +/- 10°			
	Service brake	Hydraulically activated, oil-immersed multi-disc type on each axle			
	Parking brake	Hydraulic with negative action			
	Tyres dimensions	445/65 R 22,5			
PERFORMANCE	Max. travel speed	40 km/h			
	Drawbar pull	66 kN			
	Gradeability	44%			
	Turning radius (end of forks)	6.000 mm			
WEIGHTS	Total unladen	16.830 kg			
	Front axle unladen (boom retracted and lowered)	7.330 Kg			
	Rear axle unladen (boom retracted and lowered)	9.500 kg			
TANK CAPACITIES		Deutz stage IV	Deutz stage3A	JCB stage IV i	JCB stage 3A
	Fuel tank	190 l	190 l	180 l	180 l
	AdBlue	10 l	n.a.	n.a.	n.a.
	Hydraulic oil tank	190 l	190 l	190 l	190 l
	Engine oil tank	8 l	8 l	14 l	14 l
	Cooling liquid	20 l	20 l	24 l	24 l
HYDRAULIC CIRCUIT	Max. operating system pressure	350 bar			
	Circuit type	Load sensing			
	Service pump	Bosch Rexroth – Variable displacement			
	Controls for boom and turret movements	Danfoss – Electroproportional valve SIL 2			
	Controls for stabilizers	Bosch Rexroth – Electro-hydraulics controls			
	Movements control	2 joystick Danfoss with two shafts with dead man safety device - Management with CAN bus technology			
CONFORMITY TO STANDARDS	EN 13849: concerning the safety of all controls of the machine EN 13000: concerning the standard of hydraulic cranes EN 280: concerning the standard of aerial platforms FOPS/ROPS 97/68/CE: concerning engine emissions standards				

